

# SOFTLIGHT GAMMA: SORTING MACHINE FOR RIPE AND DELICATE FRUIT

APPLES - PEARS - APRICOTS - PERSIMMONS - AVOCADO - PEACHES NECTARINES - TOMATOES - MANGO - PAPAYA

## HOW DOES IT WORK?

The equipment can be configured to sort fruit by weight, colour and size.

Each piece is assessed and then assigned to a particular operator tasked with packing that grade of fruit. As the fruit passes that operator's station, a moving LED alerts them that this fruit is assigned to them. Fruits that are assigned to other stations simply pass by without alerting.

The Zetapack grader is circular, meaning that any fruit not picked is returned around for re-picking, avoiding waste and minimising handling. The system maintains comprehensive reporting on actual fruit quantities packed.

## HYBRID SOLUTIONS

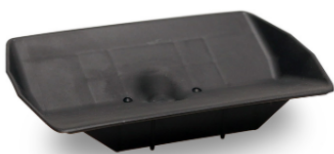
By offering an hybrid solution it maintains the delicate handling that a human operator can provide. Therefore the operator no longer needs to constantly decide and choose which fruit to pick, which improves the end result and consistency of each box.

## THE ALTERNATIVE APPROACH TO GRADING FOCUSED ON PRODUCTS WHICH ARE STILL CURRENTLY WORKED BY HAND DUE TO THEIR SOFTNESS



## MAIN FEATURES:

- CAN BE CONFIGURED TO SORT FRUIT BY WEIGHT, COLOUR AND SIZE
- ANY FRUIT NOT PICKED IS RETURNED AROUND FOR RE-PICKING, AVOIDING WASTE
- MINIMISE HANDLING
- SUITABLE FOR SHORT RUNS, NICHE FRUITS OR A SMALLER OPERATION
- LOW IN ENERGY CONSUMPTION
- INCREASES LINE PRODUCTIVITY



250 mm x 170 mm



145 mm x 95 mm